



CASEY COLEMAN GLOW UP 2026

curls wig

~~Dusty Rouge~~
~~Bellini~~ Dusty Rouge
 Bellini
~~Matte Pink~~
 Violet Haze

① pink ash — 10ml 10BV 5ml 9NA 1 drop PP Pure violet

② mink ~~Blush~~ Blush - 10ml 8SB 5ml 8BV 5ml ^{PP} _{rose} 3 drop PP Pink

③ Bellini - 10ml Pastel Rose 10ml Pastel Peach
 2 drops PP orange 2 drops PP Cool Pink

④ Dusty Rouge 10ml Pastel Peach 10ml 6R 1 drop PP Matte green

The diagram is from the view of the crown outward. Section 1 is the crown and each section goes toward the hairline

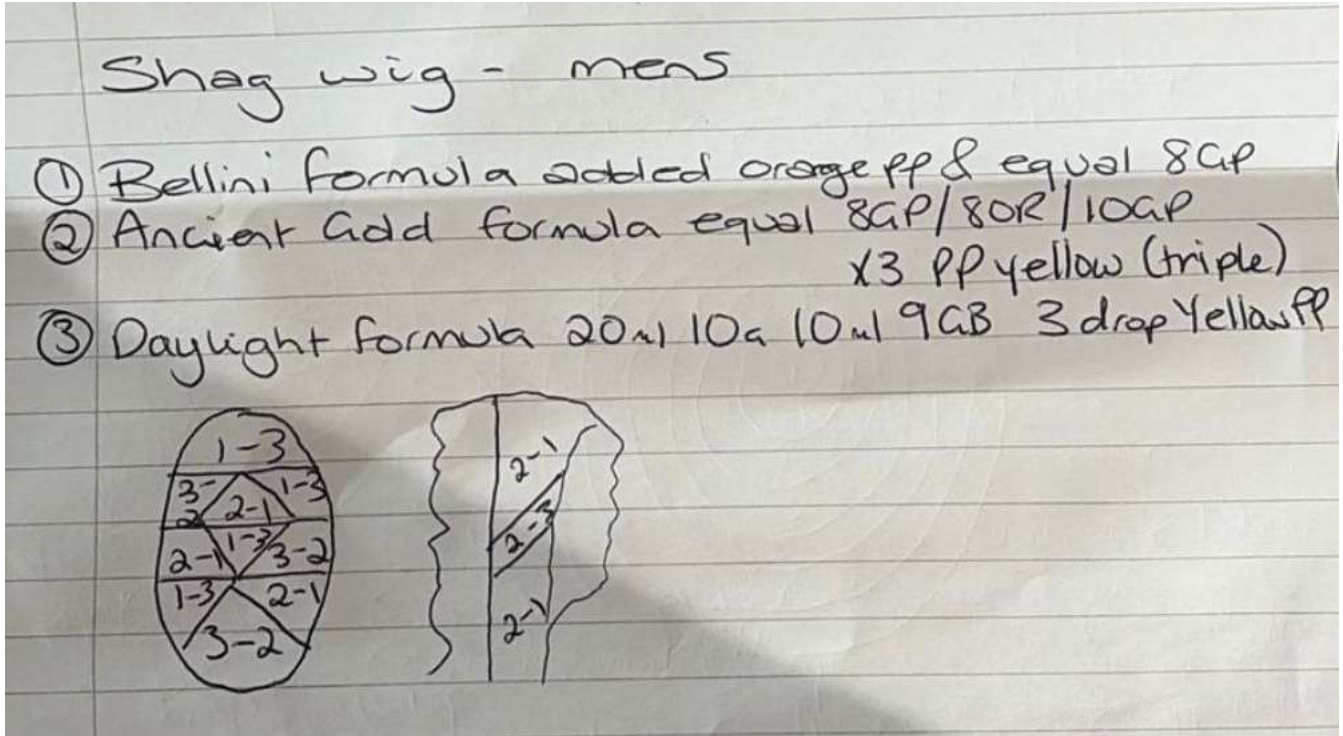
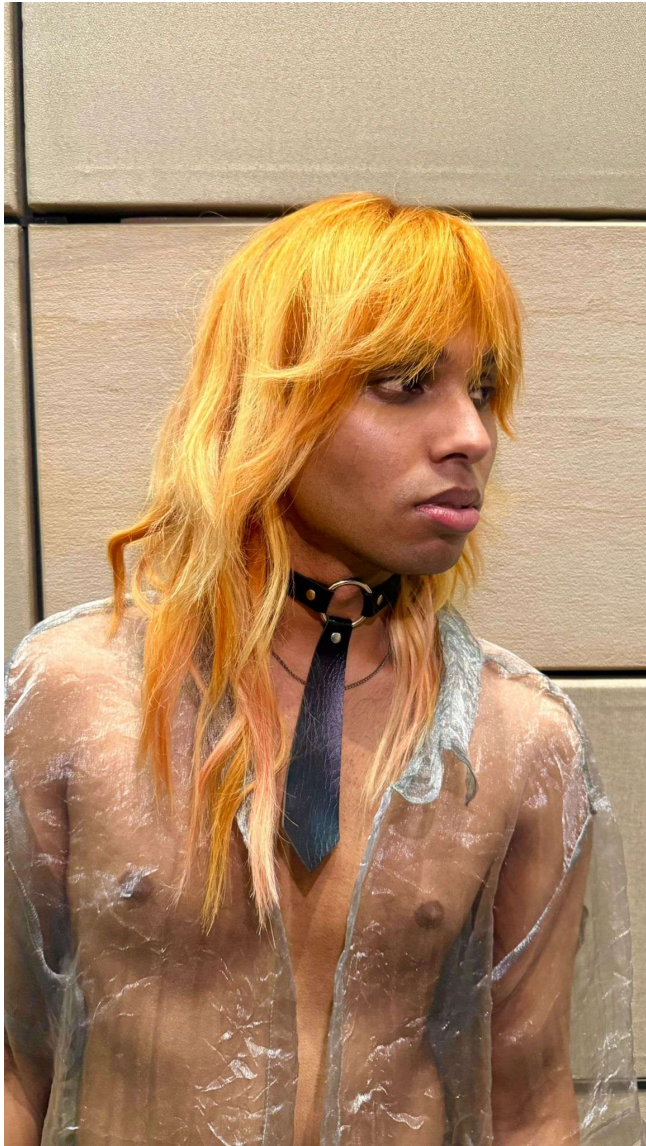
Pink ash –
 10ml 10bv
 5ml 9na
 1 drop pp pure violet

Mink blush –
 10ml 8sb
 5ml 8bv
 5ml pastel rose
 3drops pp cool pink

Bellini –
 10ml pastel peach
 10ml pastel rose
 2 drops each pp orange & cool pink

Dusty rouge –
 10ml pastel peach
 10ml 6r
 1drop pp matte green.





Men's shag.

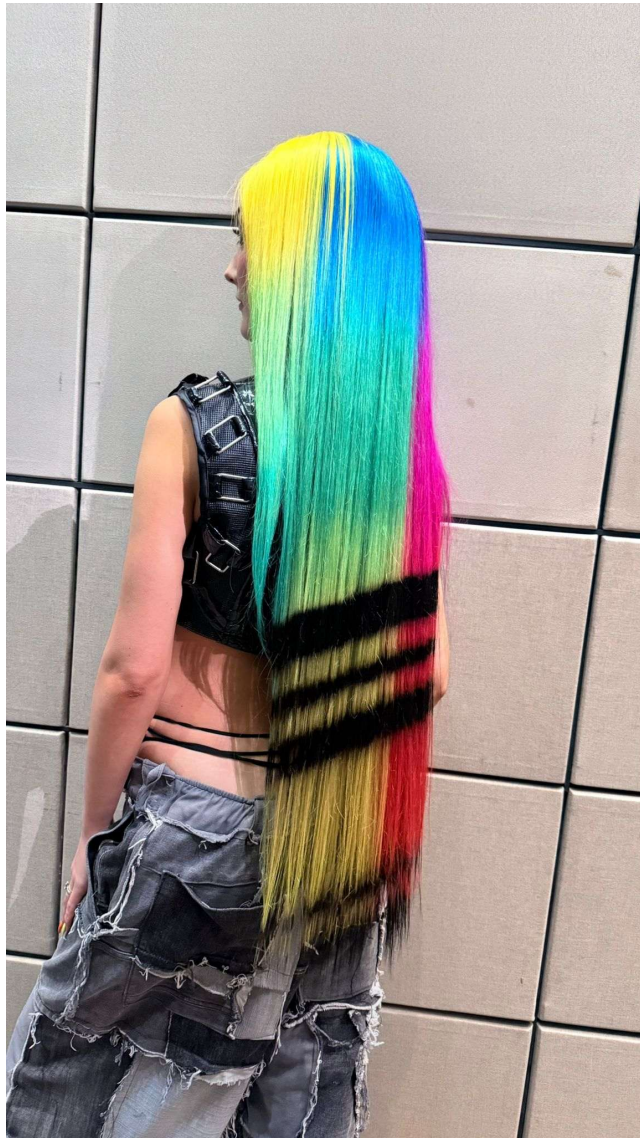
Bellini –
10ml each of pastel peach, pastel rose and 8gp,
3mls pp orange.

Ancient gold –
10ml each of 8gp 8or 10gp
3 drops pp yellow

Daylight –
20ml 10g
10ml 9gb
3 drops pp yellow

Used the velvet grading technique.

On each section, the first number is at the root blended into the second number



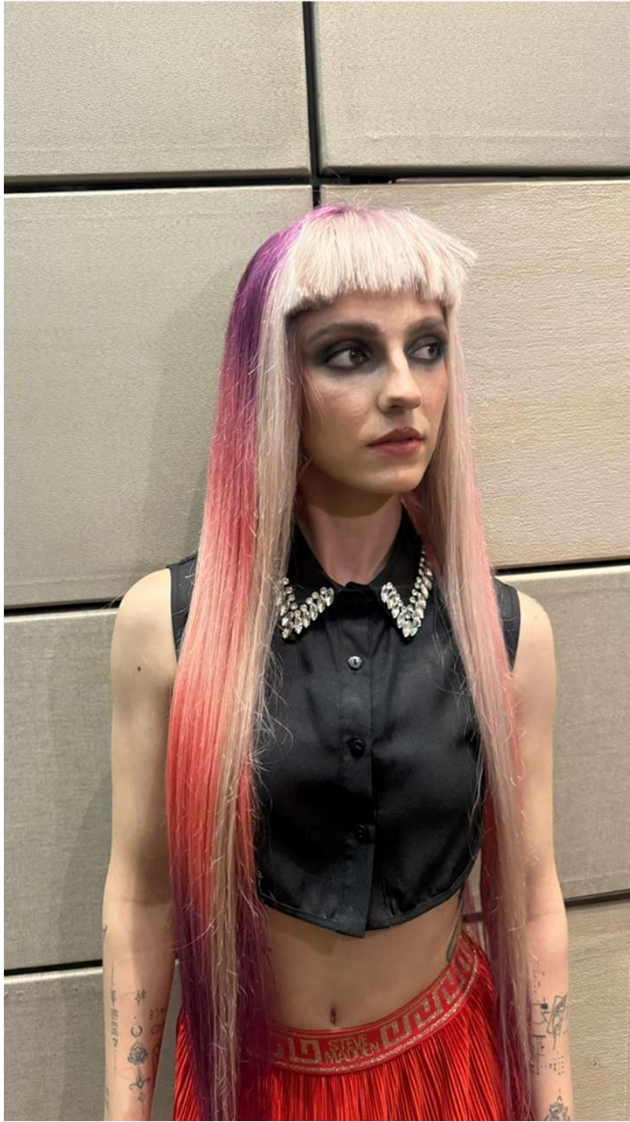
Print wig
Violet - 50ml VV@all 25ml PK@all
Pink - 65ml PK@all 5ml RV@all 5ml BLK@all
Orange - 50ml KK@all 25ml YY@all
Yellow - 70ml YY@all 5ml GK@all
Green - 25ml GN@all 45ml YY@all 5ml T9@all
Blue - 60ml T9@all 15ml BL@all

**Dahlia –
exact formula from velvet gradient trend**

Bellini - exact formula from velvet gradient but also added the same amount of pp orange and pink

Pink ash - exact formula from velvet gradient but added 1 drop of pp pure violet for every 30ml mixed

Black striped are 3na 10vol TC Vivid colours were elumen



Shine line wig

- ① Dahlia formula
- ② Bellini formula added pp orange equal pink
- ③ Pink ash formula

Back

1	1	3
2	2	
3	3	
2	2	
1	1	